

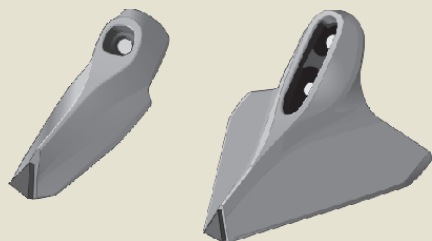


PRIMARY
SALES AUSTRALIA

January 2012 Retail Price List

Revised prices across the full Primary Sales product range are effective 1st. January 2012. These prices are expressed in A\$, are recommended retail ex-Perth, Dubbo or Adelaide and apply only to the Australian domestic marketplace. Prices and product specifications are subject to change without notice. Purchases may be made through our comprehensive network of Agricultural Machinery Dealers or Agricultural Merchandise outlets.

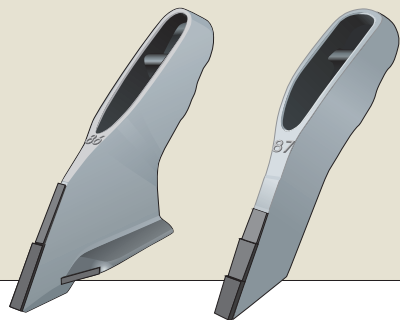
For a brief statement of PSA trading terms and conditions of sale, see foot of Website home page.



VIEW OR DOWNLOAD FROM OUR WEB SITE AT
WWW.PRIMARYSALES.COM.AU

PRIMARY POINTS Tipped and plain PR-1 to PR-33

PLAIN (UNTIPPED)		PART NO. ("T" = TIPPED)	DESCRIPTION	TUNGSTEN CARBIDE TIPPED	
PRICE Exc GST	PRICE Inc GST			PRICE Exc GST	PRICE Inc GST
14.00	15.40	PR 1-T	4 1/2" Combine	25.00	27.50
		PR 2-DB	4 1/2" Deep blade, direct drill	34.75	38.23
14.80	16.28	PR 3-T	4" Combine, low profile	25.80	28.38
15.25	16.78	PR 4-T	5" Combine	26.25	28.88
		PR 5-T	5" Horwood Bagshaw combine	28.90	31.79
14.65	16.12	PR 7-T	1 1/2" Cultivator / ripper	25.65	28.22
		PR 8-T	6" Cultivator, 44° stem angle	31.25	34.38
		PR 9-T	7" Cultivator, 44° stem angle	32.95	36.25
		PR 9-DB	7" Deep blade cultivator	40.00	44.00
24.25	26.68	PR 10-T	8" Cultivator, 44° stem angle	35.25	38.78
24.30	26.73	PR 11-T	2 1/2" Scarifier / ripper	35.30	38.83
25.20	27.72	PR 12-T	6" Scarifier buster	36.20	39.82
26.50	29.15	PR 13-T	7" Scarifier	37.50	41.25
33.00	36.30	PR 14-T	8" Scarifier, low profile	44.00	48.40
		PR 15-T	2 1/2" Cultivator	34.90	38.39
		PR 16-T	6" Cultivator (7/16" bolts)	42.95	47.25
		PR 16-2-T	6" Cultivator (1/2" bolts)	44.00	48.40
		PR 17-T	7 1/2" Cultivator (7/16" bolts)	42.65	46.92
		PR 17-2-T	7 1/2" Cultivator (1/2" bolts)	45.90	50.49
33.00	34.65	PR 18-T	2 1/2" Chisel plow	44.00	48.40
22.85	25.14	PR 20-T	6" Cultivator, 35° stem angle	33.15	36.47
22.15	24.37	PR 21-T	7" Cultivator, 35° stem angle	33.15	36.47
23.40	25.74	PR 22-T	8" Cultivator, 35° stem angle	34.40	37.84
16.40	18.04	PR 23-T	2" Cultivator / combine	27.00	29.70
30.55	33.61	PR 25-T	9" Scarifier, low profile	41.55	45.71
27.65	30.42	PR 26-T	2 1/2" HB Stubblemaster ripper	38.65	42.52
44.75	49.23	PR 27-T	8" HB Stubblemaster scarifier	55.75	61.33
		PR 30-DB	8" Deep blade cultivator (7/16" bolts)	52.00	57.20
		PR 30-2-DB	8" Deep blade cultivator (1/2" bolts)	53.00	58.30
		PR 31-DB	6" Deep blade cultivator (7/16" bolts)	51.00	56.10
		PR 31-2-DB	6" Deep blade cultivator (1/2" bolts)	53.00	58.30
		PR 33	1/2" Knife point for JD 1870 Conserva pak	81.00	89.10
		PR33-SGL	Shin guard (long) for JD 1870 Conserva pak	30.85	33.94



PRIMARY
SALES AUSTRALIA

January 2012 Retail Price List

PRIMARY POINTS (cont'd) PR 41 to PR 97 WITH TUNGSTEN CARBIDE (T.C.) WEAR PROTECTION

PART NO.	DESCRIPTION	PRICE Exc GST	PRICE Inc GST
PR 41	2 1/2" Chisel plow slip-on tip	52.50	57.75
PR 42	Spear point for use with PA42-1 adaptor	31.75	34.93
PR 44	Slip-on Knife point 12mm, cast, heat treated, (includes roll pin)	92.00	101.20
PR 45	Slip-on Super Seeder, cast, heat treated, (includes roll pin)	111.00	122.10
PA-15554	"Slimline" wedge for 1/2" bolts @ 45mm centres	15.00	16.50
PA-15555	"Slimline" wedge for 7/16" bolts @ 45mm centres	15.00	16.50
PA-15557	"Slimline" wedge for 1/2" bolts @ 57mm centres	15.00	16.50
<u>MORRIS 'GUMBO' - PSA replacement parts</u>			
PR 50	Knife point, cast Nihard, 90mm long	71.00	78.10
PR 51	Deep Knife point, cast Nihard, 130mm long	79.00	86.90
PR 54	Full 4" wing plate, with Tungsten Carbide protection	40.65	44.72
PR 54HD	Full 4" wing plate, heavy duty with TC protection	56.20	61.82
PR 55	Full 5" wing plate, with Tungsten Carbide protection	55.00	60.50
PR 57	Side plate LH or RH	13.23	14.55
<u>CONCORD - PSA replacement parts</u>			
PR 60	Knife point to suit Anderson opener, 150mm long	89.00	97.90
PR 60 HD	Knife point PR 60, with extra TC and side prot'n	104.70	115.17
PR 63	Wedge plate, to suit Anderson opener	28.85	31.74
PR 64	Full wing plate 7" wide " " (inc. bolt & nut)	92.50	101.75
PR 64-1	Full wing plate 6" wide " " " "	91.00	100.10
PR 84-DB	Scarifier Super Seeder (50mm wing)	71.50	78.65
PR 84-DB-TW	Scarifier Super Seeder (50mm T.C. wing)	81.50	89.65
PR 86-DB	Super Seeder, heavy duty (60mm wing)	69.00	75.90
PR 86-DB-TW	Super Seeder, heavy duty (60mm T.C. wing)	77.50	85.25
PR 86-DB-ATW	Super Seeder, heavy duty (angled T.C. wing)	83.50	91.85
PR 87	Knife point, 16mm, heavy duty (two x 1/2" bolts)	77.00	84.70
PR 90	"Thomas Tine" point (no Tungsten Carbide)	17.40	19.14
PR 91	Knife point, 20mm (single bolt, 7/16")	35.00	38.50
PR 92M	Mini T - boot	27.50	30.25
PR 92M-TW	Mini T - boot (T.C. wing)	35.55	39.11
PR 93	Baker style T-boot	37.00	40.70
PR 93-TW	Baker style T-boot (T.C. wing)	44.50	48.95
PR 94	Super Seeder (50mm wing, single bolt 7/16")	45.00	49.50
PR 94-TW	Super Seeder (50mm T.C. wing)	53.00	58.30
PR 94-DB	Super Seeder (60mm wing deep blade, h / duty)	51.00	56.10
PR 94-DB-TW	Super Seeder (60mm, T.C. wing)	59.50	65.45
PR 96-DB	Super Seeder (60mm wing, two x 7/16" bolts)	57.00	62.70
PR 96-DB-TW	Super Seeder (60mm T.C. wing)	67.25	73.98
PR 96-DB-ATW	Super Seeder (60mm angled T.C. wing)	72.00	79.20
PR 97	Knife point, 12mm (two x 7/16" bolts)	70.00	77.00

For Bourgault
3310 & 3320 Paralink parts,
see listing P5

For Morris
Contour Drill parts,
see listing P5