



*Thank you for purchasing a Genuine , patented “Vibra-Mat” from Primary Sales. These instructions cover the general fitting of Vibra-mats to most “open– front” headers, with single knife drives. Double knife platforms, such as FNH 971 and NH 806 are addressed in detail on P.2.*

Ensure that the platform surface is smooth and free of lumps, cracks etc. as these can be detrimental to the life of the mat.

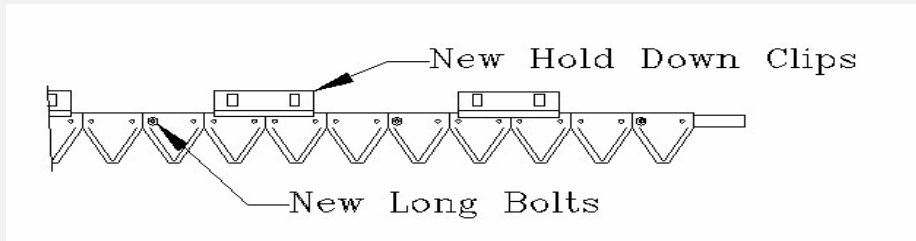
The complete fitted length of the mat should be 100mm (4”) shorter than the total inside length of the open front platform. The mat must be trimmed to the correct length at each outer end. It is recommended the cut be made at an angle of approx. 30° inwards to prevent “crop push-up” on the outward stroke.

Remove all knife hold– down clips and replace with the new low– profile type supplied. Check that the knife moves freely without binding.

Set the knife at the centre of it’s stroke. Starting from the opposite end to the Drive end, remove the bolt/ rivet closest to the centre of the space between the hold– down clips, as per Figure 1.

Ideally the first bolt will be approx. 150mm. from the end of the mat.

**Figure 1:** Placement of knife section bolts, and new hold down clips.



Replace the bolt/ rivet with one of the longer splined bolts supplied. Ensure that the bolt is “home” without overtightening. (approx 6-7 ft/lbs.) Maintain 305mm (12”) spacings along the knife spine and replace the bolts/ rivets with the new long bolts, tightening as previously mentioned. Move the knife fully to the non– drive end (right– hand side as viewed from the driver’s seat)

Measure from the first new bolt to the end– plate. Deduct 10– 15mm and mark this distance on the underside of the mat, using a rectangular spacer as a template.

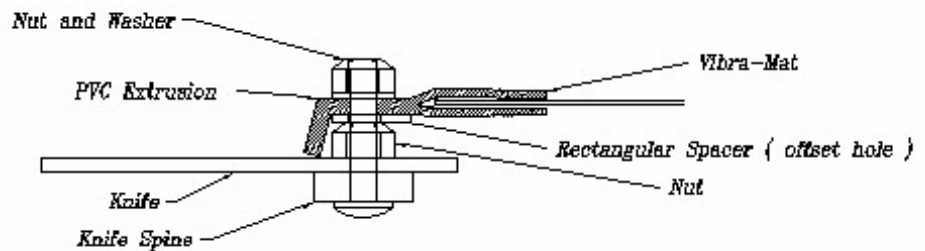
Lay the mat in place, folding the PVC spine back, with the mark in line with the first bolt, and mark the drilling location for all the other bolts. Wedge the folds in the mat apart, and remove any wrinkles. Use the rectangular spacers as a guide (offset spacer hole closest to front edge of mat) to ensure holes are correct distance back from front edge of the mat.

.....cont’d on P2

Mark through the spacers, and taking care not to damage the mat, drill 6mm (1/4") diameter holes for the long splined bolts. Fit the mat as per Figure 2 with the "V-spacer (Rectangular spacer) under the mat and the plain washer on top beneath the nut. Do not overtighten. Check that the knife moves freely without binding.

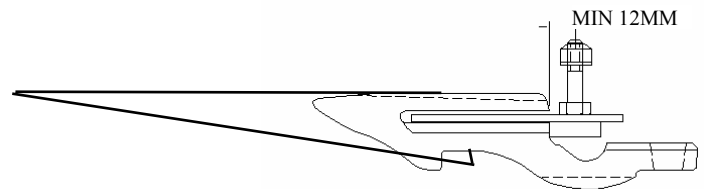
**Figure 2**

(Cross-section of Knife, Spine and Vibramat)



**COMB FRONTS:**

Vibra-mats work very well on some Comb fronts. These fronts require our weld-on type bolt kit, where the distance from the rivet line to the rear of the top ledger plate is less than 12mm. In this case, the 3/4"x 1/4" bolts can be welded on top of the knife section, behind the rivet line (see Figure 3).



**Figure 3**

(Weld-on bolt kit clearance limit)

**MACHINES WITH LARGE KNIFE HEADS:** Some machines have extra high knife heads, and it will be necessary to heat the PVC spine (with the heat from a motor exhaust or a heat gun) and bend it to suit over the knife head. Use 3/16" gutter bolts or similar to secure the mat spine onto the knife head in one or two places, as required.

**AUGER HEIGHT:** For longer mat life it is advisable to raise the auger to allow material to pass under the auger and be carried along behind, not in front of the auger.

**FORD NEW HOLLAND 971 & 806.**

Use a Single Layer or the new Extra centre-layer Double-Knife Mat. Wind knives to the innermost stroke at the centre. Leave at least one high-arch hold down clip fitted at the central knife overlap, removing the remaining hold downs. The knife will remain located by the existing rear knife keepers. Cut the mat and fit both sections as per the previous instructions to within 1/2" of the central hold down clip/s. Then, with knives at the limit of their outward strokes, cut and fit outside ends of mat sections to within 1/2" of platform ends.

**INTER 810:** Do not require hold-down clips if double cut guards are fitted.

2 x 1.5mm washers are required on Vibra mat attachment bolts, between knife section and cone nut to allow the mat to move freely.

**CALL OUR TECHNICAL SUPPORT STAFF SHOULD YOU NEED ASSISTANCE.**



**Head Office:**  
 44 Meliador Way  
 Midvale W.A6056  
 Ph: (08) 9250 3500  
 Fax: (08) 9250 3600  
 Email:  
 perth@primarysales.com.au

**Eastern Area Office:**  
 129 Fitzroy St.  
 Dubbo N.S.W. 2830  
 Ph: (02) 68822844  
 Fax: (02) 68826419  
 Email:  
 Dubbo@primarysales.com.au